

# Paxxal Plastic Pallet



## Dimensions

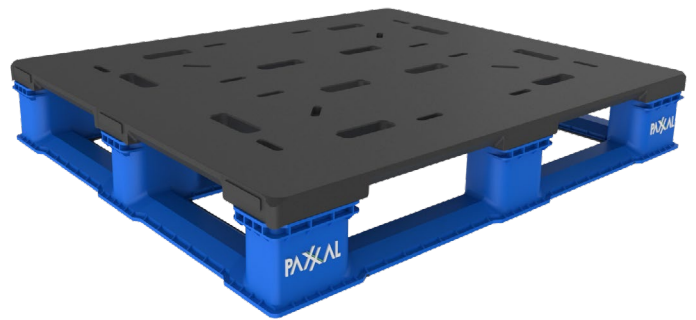
Size	121cm x 102 cm x 14 cm 48" x 40" x 5.62"
Weight	< 22.5 kg < 50 lbs.
Operating Temperature	-34°C to 60°C -30°F to 140°F

## Load Capacity

Static	13,607 kg 30,000 lbs.
Dynamic	2,267kg 5,000lbs.
Racked	1,270kg 2,800lbs.

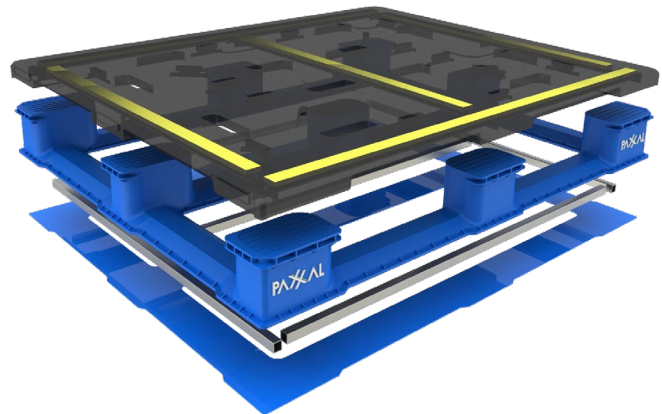
## Advanced Materials Technology

- Plastic composite construction is rigid, tough, and lightweight
- Manufacturing process guarantees identical products
- 100% recyclable and environmentally friendly
- Strong long-lasting construction



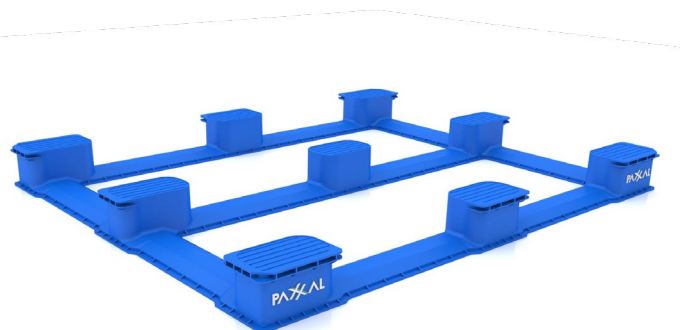
## Increased Efficiency

- Moulded construction eliminates nails and splinters
- 4-way entry for efficient and accurate pick and place
- Solid Surface washes easily without trapping water
- Impervious to insect attack, salt water and corrosion
- Water drains away to prevent fungal and bacterial growth



## Cost Saving Design

- Reduced closed loop transport cost
- Reduced cost of sanitation
- Reduced product damage
- No fumigation costs
- Strength and durability reduce maintenance costs
- Long lifespan reduces replacement costs
- Recyclability reduces disposal costs



Attribute	Specification
Pallet Dimensions	121 cm x 102 cm x 14 cm 48" x 40" x 5.62"
Pallet Weight	< 22.5 kg < 50 lbs.
Static Load Capacity	13,607 kg 30,000 lbs.
Dynamic Load Capacity	2,267kg 5,000lbs.
Top Deck Coverage	80%
Forklift Access	4 Sides
Wide Pallet Truck Access	4 Sides
Structural Sustainability (Creep)	7 Years
Material Consistency	Dimensionally stable with consistent material performance
Operating Temperature	-34°C to 60°C -30°F to 140°F
Health and Safety	Complies with GMA Standard regulations related to goods handling & transportation
Durability	Multi-use

