

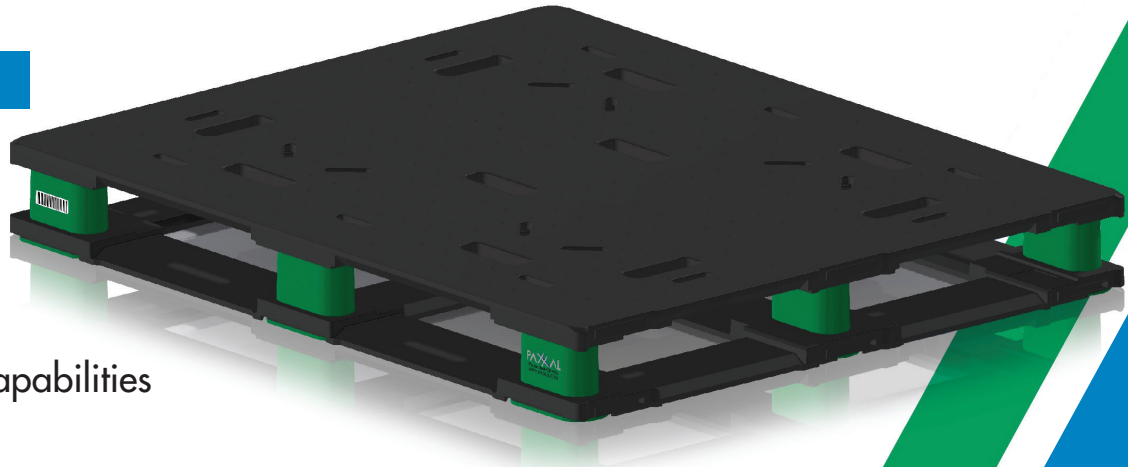
PAXXAL North American Pallet

Pallet Overview

- Meets all North American GMA Specs (see specs below)
- Smart Tracking / Tracing Capabilities
- Hygienically safe – Impervious to liquid and insects
- Widest 4 way entry
- Under 50 pounds
- OSHA compliant

Custom Capabilities

- Color
- Branding
- Racking performance (internal reinforcements)
- Custom weight and cost capabilities
- PaxTrax technologies
- Top deck rubber inserts



Stronger and lighter than plastic alone
Sustainability • Sanitary • Strength • Savings • Smart

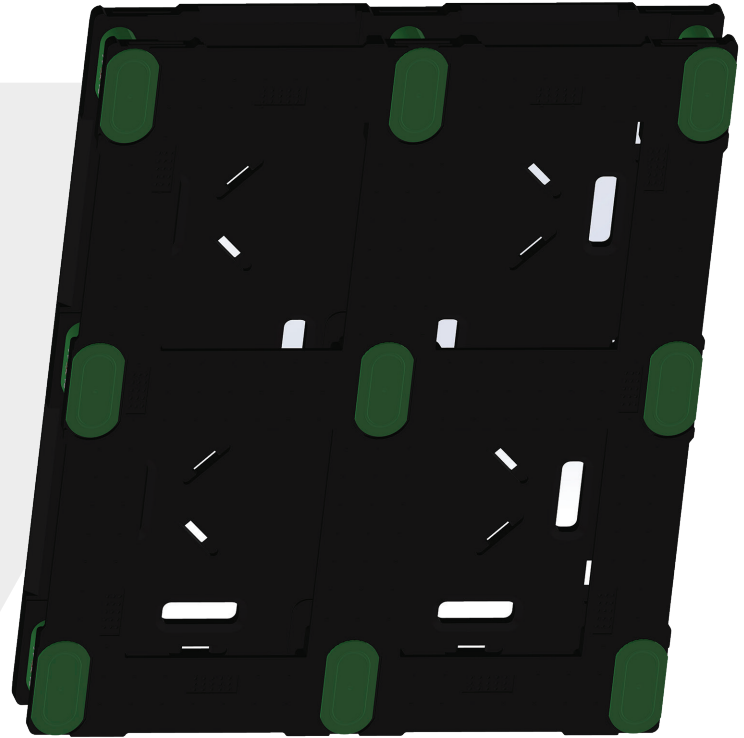
North American Pallet Specifications

Size :	48 in x 40 in x 5.56 in
Weight :	< 50 lbs
Pallet Entry :	4 Way Entry
Top Deck Coverage :	Maximum
Edge Racking Load Capacity :	2,800 lbs
Dynamic Load Capacity :	5,000 lbs
Static Load Capacity :	30,000 lbs
Temperature Range :	-40F to 140F
Fire Certification :	UL Pending
Material :	High Density Polyethylene + Solid Proprietary Core

Solid Filled = Solid Performance

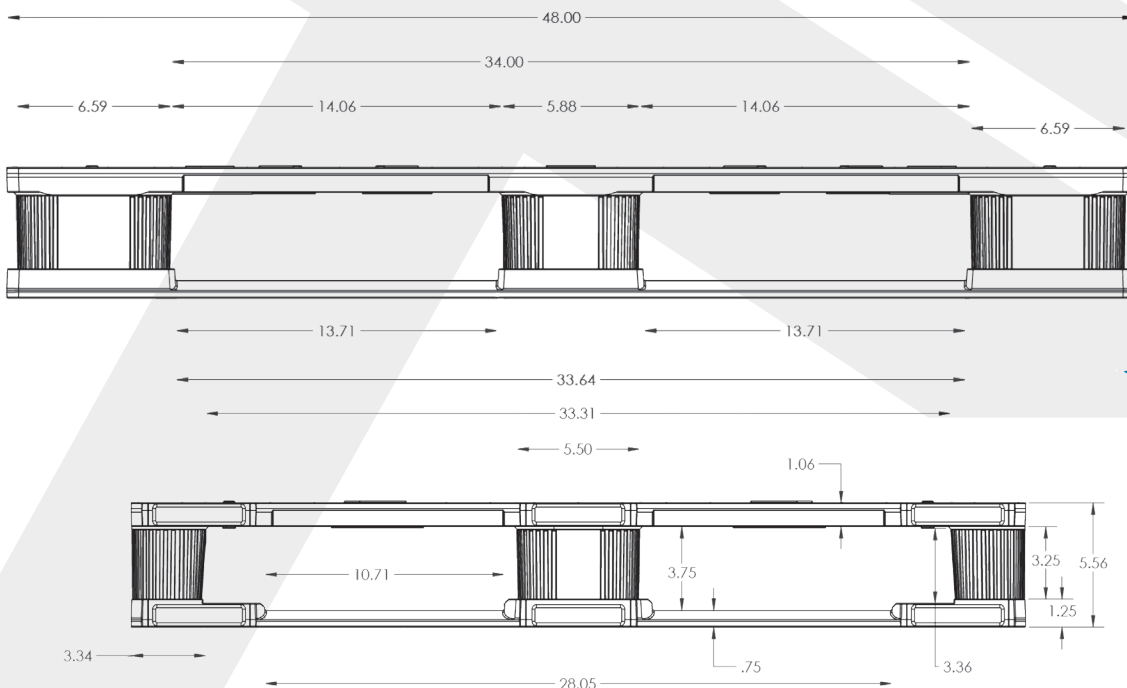
Top/Bottom Deck

- Cruciform bottom design – load stability
- Solid filled decks
- Maximum top deck coverage
- Strategically positioned hand holds for easily handling
- Internal Reinforcement (rackability)
- Chamfered bottom/top deck for easy entry of material handling equipment
- Optional top deck rubber inserts
- Textured surface/additional coefficient of friction



Leg/Block

- Stretch wrap complementing corners
- Interlocking design
- Optimized design for efficient equipment handling



Dimensions

